

Hawaiian Civic Club of Wahiawā... 'Ano'ai



"e kūka'awe i nā kapu o Kūkaniloko no ka mea aloha nō ho'i kākou ia lākou i nā kau a kau..."
"to guard the kapu of Kūkaniloko because we love them for all time..."

ka pa'i ana helu
kanawalu kūmamālima
November 2k16
Editor: Kalimapau

E Ola Nō! Kūpuna Roselia Poepoe, Roselani Hall, a me Bernard Rodrigues HCCW Founding & Charter Members of 56 years...

FLASHBACK...Ho'o lōkahi: The Year of the Hawaiian 1988.KITV <https://www.facebook.com/noeau91/videos/1449152231779322/>

'Ōlelo No'eau...Mary Kawena Pukui #1191...*"I ka 'ōlelo no ke ola, i ka 'ōlelo i ka make"*...in the spoken word there is life, in the spoken word there is death....Words can heal; words can destroy. Paying attention to proverbs such as this will open doors, pathways and journeys that are parts of our individual lives...if, we, but listen patiently and then go forth when the time is right, when we are told to, then act accordingly. It is 'oko'a -different- for each individual.
Hawaiian Civic Club of Wahiawā Kahu Peter W. Kawaimaka Lonoae'a
Photo credits by Vicki Pakele



11.04.2k16...DLNR onsite meeting at Kūkaniloko...Representative Marcus Oshiro, Department of Land and Natural Resources Chairperson Suzanne Case and Deputy Director Kekoa Kaluhiwa met with HCCW's *nā lālā 'ōiwi kupuna* Pila Short, Noelani DeVincent, Vicki Pakele, Kalimapau and *kia'i* Tom Lenchanko. After discussion, a brief site interpretation gave our guests a deeper perception of our *kuleana* as stewards of Kūkaniloko. *Mahalo nui loa...*

11.09.2k16...The Hawaiian Civic Club of Wahiawā's monthly meeting began with singing our Club Song, Pa'ahana, under the leadership of *Alaka'i Mele* Malia Doo with Papa Henry Doo strumming his homemade red base can. *Pelekikena* Brand Bajo-Daniel officiated a brief meeting highlighted by two special guests. HCCW was established on November 10th, 1960. Together we happily celebrated our 56th Anniversary. *Ho'omaika'i*



11.09.2k16... The Hawaiian Civic Club of Wahiawa 2016 Letter of Appreciation was presented to Miss Gwen Maeha, a Junior at Leilehua High School who is an outstanding athlete and scholar. Pictured to the left is Miss Gwen Maeha, her proud parents and HCCW *lālā 'ōiwi Kupuna* Pila Short who nominated Gwen for this Award. He stated, "We should stop and take the time to honor the young ones in our very special Hawaiian Community for their achievements. We need to recognize the good work they are doing as they re-build the foundation of our Nation, *ko Hawai'i paeaina* for future generations!" With a 3.43 cumulative grade-point average, she is in the National Honor Society. Taking on the challenges of accelerated courses in Chemistry and Trigonometry ready's her for college. Gwen also excels as an athlete. She was a competitive bowler in the Hawai'i State Championships and is an outstanding member of the Leilehua High School softball team and the community Hana Pa'a Girls Softball Club. We are so proud of you Gwen...

Hawaiian Civic Club of Wahiawā... 'Ano'ai



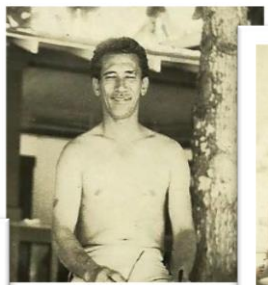
"e kūka'awe i nā kapu o Kūkaniloko no ka mea aloha nō ho'i kākou ia lākou i nā kau a kau..."
 "to guard the kapu of Kūkaniloko because we love them for all time..."

*ka pa'i ana helu
 kanawalu kūmamālima
 November 2k16
 Editor: Kalimapau*



**"Kupuna Roselia Poepoe, Kupuna Roselani Hall, a me Kupuna Bernard Rodrigues"
 HCCW Founding & Charter Lifetime Members of 56 years... E Ola Nō!**

Established November 10, 1960...



**Celebrating Our 56th Anniversary
 November 10th, 2016
 We Honor Our Founding Kūpuna...**



ALOHA is forever...and FOREVER is the old way of the ancients

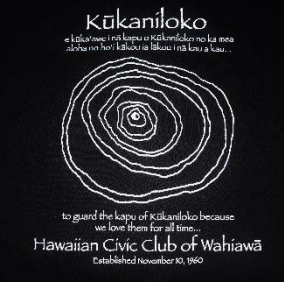
Hawaiian Civic Club of Wahiawā... 'Ano'ai



"e kūka'awe i nā kapu o Kūkaniloko no ka mea aloha nō ho'i kākou ia lākou i nā kau a kau..."
 "to guard the kapu of Kūkaniloko because we love them for all time..."

*ka pa'i ana helu
 kanawalu kūmamālima
 November 2k16
 Editor: Kalimapau*

E Ola Nō! Kūpuna Roselia Poepoe, Roselani Hall, a me Bernard Rodrigues HCCW Founding & Charter Members of 56 years...



Kukaniloko.org

Visit Kukaniloko.org for the names of our HCCW kūpuna pictured here.

HCCW Historian Photo Collection 1960 - 2016

'Ōlelo No'eau...Mary Kawena Pukui #817..."He meheuhei mai na kūpuna." Habits are acquired from our ancestors.



*We'll see you in the sunlight and feel you in the rain
 We honor your legacy; it shall not be left in vain
 Aloha ke Kupuna, your spirit lives within
 Because of you, we stand proud and know:
 We are Hawaiian...*

by kalimapau

Dedicated to our Hawaiian Civic Club of Wahiawā Kūpuna who have gone before us...

Hawaiian Civic Club of Wahiawā... 'Ano'ai



"e kūka'awe i nā kapu o Kūkaniloko no ka mea aloha nō ho'i kākou ia lākou i nā kau a kau..."
 "to guard the kapu of Kūkaniloko because we love them for all time..."

*ka pa'i ana helu
 kanawalu kūmamālima
 November 2k16
 Editor: Kalimapau*

E Ola Nō! Kūpuna Roselia Poepoe, Roselani Hall, a me Bernard Rodrigues HCCW Founding & Charter Members of 56 years...

11.09.2k16...56th Anniversary Guest Speaker Tom Penna of Waialua presented our HCCW Pelekikena Brandon Bajo-Daniel with a 2' x 3' mounted map of O'ahu. Place names are depicted in their 'ōlelo Hawai'i inoa. Shorelines defined are



Photo credits by Kalimapau

a compilation of map surveys done earlier in Hawai'i's history. Tom received the large transportable 20' x 30' version of this map of O'ahu in December. Here, the larger map >>>> was photographed at UH West O'ahu. Please "Contact Us" at **Kukaniloko.org**



for more information on the availability of these unique maps of O'ahu, intended for educational purposes for all...ēō



Photo credits Vicki Pakele

11.18.2k16...An Educational visit to Leilehua High School Hawaiian Studies haumana... LHS Kumu Sherri Anzai invited HCCW lālā 'ōiwi Vicki Pakele to her classroom to share the symbolic significance and show her students how to make *ho'okupu*. This was in anticipation of their first visit and site interpretation at O'ahunui and Kūkaniloko Birthstones State Monument. *Mo'olelo of Akua, Lono a ka Makahiki* of peace, agriculture, fertility, and prosperity, was shared with students. *Ka leo, oli, hula, la'au, mele, wai, pa'akai, pūpū* and *pōhaku* were just a few other precious *ho'okupu* that were mentioned in her presentation. *Mahalo ia kākou* for your interest. It is our collective *kuleana* to care for Kūkaniloko.

11.19.2k16...November 3rd Saturday Clean Up volunteers were met by dark cloudy skies and rain but the weather did not deter the enthusiasm and commitment of our community of new Friends of Kūkaniloko. PBR Hawaii Executive Vice President Russell Chung, a Wahiawā homegrown Leilehua High School graduate, and his team of fifteen, adults and children cleared the area left of the inside chain. They worked from 9 am-noon. *Mahalo nui loa.*



Photo credits by Kalimapau

Hawaiian Civic Club of Wahiawā... 'Ano 'ai



"e kūka'awe i nā kapu o Kūkaniloko no ka mea aloha nō ho'i kākou ia lākou i nā kau a kau..."
 "to guard the kapu of Kūkaniloko because we love them for all time..."

ka pa'i ana helu
 kanawalu kūmamālima
 November 2k16
 Editor: Kalimapau

E Ola Nō! Kūpuna Roselia Poepoe, Roselani Hall, a me Bernard Rodrigues HCCW Founding & Charter Members of 56 years...



Mahalo Russell Chung, Ramsay Taum and the friends of PBR Hawaii. Thank you for taking the time from your busy schedules to *mālama* Kūkaniloko. You are all much appreciated...eō

Photo credits by Kalimapau



FLaSHback...HCCW Open House 2k8 was held at the Wahiawā Botanical Gardens. Hawaiian Civic Club of Wahiawā *lālā 'ōiwi* Gwen Kamisugi, displayed her beautiful collection of her *lauhala* weaving. She shared her *mana'o* with many who were interested and spent some time teaching those in attendance how to make *lauhala* bracelets. Eight years later, her influence continues.



Gwen Kamisugi...ka wahine e 'imi ana nei 'o ia i kana 'ike kumu lima hana no 'eau lauhala...

11.19.2k16...November 3rd Saturday Clean Up volunteers also included the haumana of Gwen Kamisugi... *Nā Lālā O Ka Pūhala* shared their expertise. *Hala* trees growing onsite at Kūkaniloko Birthstones State Monument were in need of their *aloha*. This was a special day in the history of *mālama* Kūkaniloko. They got down to business grooming and cleaning the *'ōpala*. When *pau*, everything was so beautiful! If trees could breathe and smile, this was the day for it! On November 26th, the following Saturday, *haumana* returned to plant a new generation of *hala* onsite bringing 5 new trees. They will return for the December 3rd Saturday Clean up on the 17th to continue to *malama*...eō



Hawaiian Civic Club of Wahiawā... 'Ano'ai



"e kūka'awe i nā kapu o Kūkaniloko no ka mea aloha nō ho'i kākou ia lākou i nā kau a kau..."
 "to guard the kapu of Kūkaniloko because we love them for all time..."

*ka pa'i ana helu
 kanawalu kūmamālima
 November 2k16
 Editor: Kalimapau*

E Ola Nō! Kūpuna Roselia Poepoe, Roselani Hall, a me Bernard Rodrigues HCCW Founding & Charter Members of 56 years...

'Ōlelo No'eau... Mary Kawena Pukui #914... **"He po'o ulu ko na mea kanu"**...plants have heads that grow again. An assurance that if you break off the top of a plant, it will put forth a new one. Our Nation, *ko Hawaii paeaina* lives...
 Photo credits by Kalimapau



Mahalo Nā Lālā O Ka Pūhala of HCCW's lālā 'ōiwi Gwen Kamisugi for your assist to *malama* the *hala* of Kūkaniloko...ēō



11.19.2k16... 'Ōlelo Client and Volunteer Pā'ina was held at the Mapunapuna 'Ōlelo Community Media Center. HCCW's Jonette Buza, Director of Wahiawā Media Center, Sheila Valdez, Amy Kelly, Vicki Pakele and Kalimapau were there to greet visitors. Stations were set up throughout the complex where different Media Centers could let everyone else know what was happening in their district. In our Wahiawā room, HCCW displayed our new map of O'ahu island and our Kūkaniloko Educational display. We were able to get a shot of Vicki and her daughter Pualena while our HCCW Nonprofit PSA played for our guests. Mahalo to our hosts and hostesses of 'Ōlelo Community Media Center. It was a wonderful turn out of people. Great to be on board!



Photo credits by Kalimapau, Vicki Pakele, Sheila Valdez

Hōkūle'a update...December 2k16... <https://www.facebook.com/greatbigstory/videos/1620450948257332/>

Hawaiian Civic Club of Wahiawā... 'Ano'ai



"e kūka'awe i nā kapu o Kūkaniloko no ka mea aloha nō ho'i kākou ia lākou i nā kau a kau..."
"to guard the kapu of Kūkaniloko because we love them for all time..."

*ka pa'i ana helu
kanawalu kūmamālima
November 2k16
Editor: Kalimapau*

E Ola Nō! Kūpuna Roselia Poepoe, Roselani Hall, a me Bernard Rodrigues HCCW Founding & Charter Members of 56 years...

11.23.16...Leilehua High School Hawaiian Studies Class...The O'ahunui visit was postponed because of heavy early morning rains. The bus arrived at Kūkaniloko and *haumana* and *kumu* prepared for protocol. *Haumana*, adorned in their *pahu*, *lei po'o*, *kupe'e lima* and *kupe'e wāwae* carried their *ho'okupu*. After travelling from east to north, north to west and west to south, their *mele kahea* was presented to Kūkaniloko. *Ho'okupu* of *lei* was presented as well as *hula*. *Kahu* Lonoae'a then proceeded with the *pi kai* blessing to first the *kane*, and then for the *wahine...eō*
Photo credits by Kalimapau



Makana from the Hawaiian Civic Club of Wahiawā of *ki'eke pa'akai pu'upu'u* - satchels of sea salt - were gifted to all.



Mahalo to the Leilehua High School Hawaiian Studies Class for sharing the morning with us at Kūkaniloko Birthstones State Monument. We are pleased that you have learned the value of caring for our past wisdoms and knowledge in order to bring it forward for yours as well as the generations that will follow in your footsteps. *Ho'omaika'i kākou...*

Hawaiian Civic Club of Wahiawā... 'Ano'ai



"e kūka'awe i nā kapu o Kūkaniloko no ka mea aloha nō ho'i kākou ia lākou i nā kau a kau..."
 "to guard the kapu of Kūkaniloko because we love them for all time..."

*ka pa'i ana helu
 kanawalu kūmamālima
 November 2k16
 Editor: Kalimapau*

E Ola Nō! Kūpuna Roselia Poepoe, Roselani Hall, a me Bernard Rodrigues HCCW Founding & Charter Members of 56 years...

11.26.2k16...Kumu Miki'ala Lidstone of Kaululaua'e Hula in Kapolei began the O'ahunui visit with beautiful oli.



Their visit to Kukaniloko Birthstones State Monument followed beginning with protocol with Kahu Peter Kawaimaka Lonoae'a, Kalimapau and *kia'i* Tom Lenchanko. They presented their *ho'okupu* and offered a *hula* and *oli* in addition. *Haumana* enjoyed their site interpretation with Uncle Tom. *Mahalo* for your visit...*eō*



Photo credits by Kalimapau, Vicki Pakele and those submitted by Kaululaua'e Hula...Mahalo for such a special visit.

Hawaiian Civic Club of Wahiawā... 'Ano'ai



"e kūka'awe i nā kapu o Kūkaniloko no ka mea aloha nō ho'i kākou ia lākou i nā kau a kau..."
"to guard the kapu of Kūkaniloko because we love them for all time..."

*ka pa'i ana helu
kanawalu kūmamālima
November 2k16
Editor: Kalimapau*

E Ola Nō! Kūpuna Roselia Poepoe, Roselani Hall, a me Bernard Rodrigues HCCW Founding & Charter Members of 56 years...



Mahalo to Kumu Miki'ala Lidstone for bringing your *haumana* of *Kaululau'e Hula* of Kapolei to spend the morning with us at O'ahunui and Kūkaniloko. We appreciate your work to assist us in the preservation of our *Mo'olelo* – traditional comprehension – to perpetuate all things Hawaiian, seen and unseen, for our Nation, *ko Hawaii paeaina...eō*

11.29.2k16... "Ka Leo Lōkahi 'O Wahiawā – Wahiawā's United Voice" is a newly formed group which envisions an opportunity to strengthen and celebrate partnerships in our community. Leilehua Complex area schools along with business and community members were invited to network and share any initiatives, achievements, and upcoming events promoting our community. Held from 11:00-12:00 pm in Leilehua High School's Ala Serenity Dining Room, we were treated to delicious delicacies and light refreshments prepared by the Leilehua Culinary Academy students as we socialized with others at this networking event. The meeting was moderated by Mr. Jason Nakamoto, Principal of Leilehua High School and was video-taped to be televised on 'Ōlelo. *Mahalo* to the LHS staff for their introspection of community *ALOHA!*



Next HCCW Monthly Meeting 2nd Wednesday, January 11, 2017 @ 7 pm at the Wahiawā Ryusenji-Soto Mission

***To All of our HCCW na lālā 'ōiwi a me na lālā ho'okama
And to all the Friends of Kūkaniloko...
Aloha Kalikimaka 2k16 me ka Hau'oli Makahiki Hou 2k17***